



קטלוג ספות



Modern series

SIMPLER
AND PURER



neveitalia

MODEL: 713





WHAT'S YOUR GUILTY PLEASURE?

Ella es Ashley Smith. A sus 21 años es una modelo internacional fuera de serie y aquí te presenta una selección de faldas con eclécticos looks que te encantarán.

FERRI: SABELLE BARRIOS
COORDINACIÓN DE MODA: PAMELA OCAÑO
PRODUCCIÓN ELLE MÉXICO

MODEL: 713



MODEL: 044B



LIFTING THE VEIL

REPORTAGE
REPORTAGE

The day after walking in China's spring
show in Paris, Basso and Muraro
for the first time in a studio or on a page of
the magazine. The two men, dressed in
white, are sitting on the sofa in the
studio of the photographer Basso in the

MODEL: 108





A DAY IN L.A.

MODISCHER
STREIFZUG DURCH
DIE CITY OF
ANGELS –
IN LOOKS VON
STILSICHERER
HOLLYWOOD-
EXTRAVAGANZ

Kostenlos gratis Modellproben mit
Lila-Broschüre zum 100. Geburtstag der
Hochschule für Gestaltung in Garching
Kontaktieren Sie uns unter
089 30924-111

FOTOS: CLAUDIA KROPPFEL
UND STEFAN HILDEBRAND

MODEL: 109



MODEL: 216





MODEL: 269





MUST HAVE

first things first, 3:45 am is for me, the middle of the night, it is not early morning, and yet here i am getting into a town car with me executive editor—and we to work. let me just say that time again that is not even a real time.

what' s a lot more fun than that? being televised, that' s what. unfortunately, we quickly realize that appearing on television is not that easy, even for me. and so i am here to do everything the three anchors—steve doocy, brian kilmeade, and gretchen carson—do, aside from actually

MODEL: 397



ATMOSFERA

Musas de outrora, elegantes e hiperchiques, inspiram o visual do outono-inverno europeu. Materiais ricos e saltos poderosos são pré-requisitos para o novo desejo fashion. - FOTOS GASTON MENEZES

retro

MODEL: 513





MODEL: 515



MODEL: 555B





combo fashion

A liberdade inspira na escolha de tons, mas alguns
elementos são-chave para quem gosta de seguir a
contemporaneidade no estilo. Têxteis de qualidade,
como lã, linho, algodão e misturas coloridas, tornam-se
essenciais, assim como os materiais nobres.

inspirado por Page 0001/0001
modelo: Paulo 0001/0001
inspiration de inspiração 0001/0001
inspirado: Paulo 0001/0001

MODEL: 570B



MODEL: 666B





AVE MARIA

КИПЕШНО-БЕЛЫЙ
ХЛОПОК, КРУЖЕВО
И ЦЕЛОМУДРЕННЫЙ
ЖЕМЧУГ – В НЕВИННОСТИ
БОЛЬШЕ СОБЛАЗНА,
ЧЕМ В ОТКРОВЕННОЙ
СЕКСУАЛЬНОСТИ.

MODEL: 721



you're GORGEOUS

MODEL: 756ang



*Slip away from mundane reality and relax
into an idyllic escape with pajama-inspired elegance.*

DREAM CATCHER

PHOTOGRAPHY BY JOSHUA KLEIN / STYLING BY CLARE BURCHARDT

MODEL: 782





MODEL: 798ang

MODEL: 798





MODEL: 808



A DAY IN L.A.

MODISCHER
STREIFZUG DURCH
DIE CITY OF
ANGELS –
IN LOOKS VON
STILSICHERER
HOLLYWOOD-
EXTRAVAGANZ

Kostenlos gratis Modellversuche mit
Liniennetz, um 199 € aus der Her-
stellungskosten von 299 € zu sparen.
Sonderkoffer von Marc Jacobs

FOTOS: CLAUDIA KROPPFEL
UND STEFAN INDLERFELDER

MODEL: 911





MODEL: 958



MODEL: 959





MODEL: 965



MODEL: 969B





MODEL: 969A



DR ARK ROMANCE

Όταν ένα πανωφόρι ξεφεύγει από τον κλασικό προστατευτικό του ρόλο για να μετατραπεί σε κυρίαρχο στοιχείο μιας εικόνας, το αποτέλεσμα είναι αναπάντεχα ταlustικό. Φωτογραφίες: Dimitris Skoufos



MODEL: 993



MODEL : 994

MODEL: 1205





MODEL: 1504ang



MODEL: 1504B&1504C



MODEL: 1504





ARTCITY IS COMING TO KOREA

vogue photography building

*We've only just begun to live
White lace and promises
I kiss the luck and We're on our way
We've only begun.*

*Before the rising sun we fly
So many roads to choose
We start our walking
And learn to run
And yes! We've just begun*

*Sharing horizons that are new to us
Watching the sights along the way
Taking it over just the two of us
Working together day to day, together*

*And when the evening comes we smile
So much of life ahead
We'll find a place where there's room to grow
And yes! We've just begun.*

MODEL: 1514





MODEL: 1516



MAS
CU
LIN



combo *fashion*

A liberdade sempre na medida de bom, mas alguns
detalhes não-chave para garantir gosto de seguir a
contemporaneidade no vestir. Falamos de costuras,
seus lapos, botões, capôs e detalhes colado; texturas,
metalizadas, vidro e cores, mantendo cores.

inspirado por Diego BORGES
na de Tenda (14/20/2010)
Tenda (14/20/2010) - 14/20/2010 - 14/20/2010
inspirado por Diego BORGES (14/20/2010)



MODEL: 1530B



MODEL: 1530&1530A

MODEL: 1540B



MODEL: 1540



MODEL: 1541A



MODEL: 1541



A DAY IN L.A.

MODISCHER
STREIFZUG DURCH
DIE CITY OF
ANGELS –
IN LOOKS VON
STILSICHERER
HOLLYWOOD-
EXTRAVAGANZ

Kurzer grauer Wollfaserbezug mit
3/4 Armlehne, um 1195 €, aus der Her-
wickelkollection von YVES ROSE ROBERTO
Sommerkollektion von Marc Jacobs

FOTOS: CLAUDIA KNOSPFL
UND STEFAN INDLERGER



MODEL: 1542





MODEL: 1547



MODEL: 1551





MODEL: 1552



MODEL: 1553



MODEL: 1554



MODEL: 1578





UNA JOVEN DE 75 AÑOS

Visítanos a la revista de la cosmética, EVELYN LAUDER, en su imponente mansión de Palm Beach para hablar de su matrimonio, de la familia Lauder y sobre todo para que nos enseñe sus secretos de belleza. Por BOB HASKELL. Fotografía de DOUGLAS FRIEDMAN.

MODEL: 1578



MODEL: 1579&1579ang



It's here
SANDAL WEATHER

Banish the boots and step into summer in the top sandal styles of the season, from Chloé's effortless mules to Gucci's streetready clogs.

MODEL: 1582&1582ang





MODEL: 1584

combo *fashion*

A liberdade impera na moda de hoje, mas alguns elementos são chave para quem gosta de seguir a contemporaneidade no vestir. Falamos de suéteres, saias-lápis; blazers, capas e vestidos-colete; texturas metalizadas, vinil e couro, muuuuito couro.

fotografia por Tiago MOLINOS
moda Vanda JACINTHO
beleza Duda MOLINOS (CARCO DE QUEIROZ)
tratamento de imagem Leo VAS
estrelando Fabi MAYER (WAY)

MODEL: 1585



MODEL: 1586



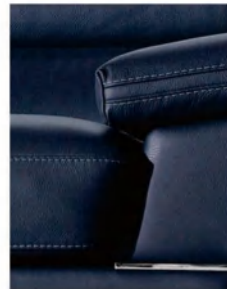


MODEL: 1588





MODEL: 1590



BEST IN SHOW

LYDIA WILLEMINA



MODEL: 1594



MODEL: 1622



MODEL: 1733

Into the Wild

L'ampio mercato europeo, l'ottimo stile su
piatto, l'ignavia del bene europeo - in poche parole,
un'area di crescita di grande successo.



MODEL: 1735



MODEL: 1739

MODEL: 1841





MODEL: 1842

MODEL: 1845



combo *fashion*

A liberdade impera na moda de hoje, mas alguns elementos são chave para quem gosta de seguir a contemporaneidade no vestir. Falamos de suéteres, saias-lápis; blazers, capas e vestidos-colete; texturas metalizadas, vinil e couro, muuuuito couro.

fotografia por **Tiago MOLINOS**
moda **Vanda JACINTHO**
beleza **Duda MOLINOS** (CAICO DE QUEIROZI)
tratamento de imagem **Leo VAS**
estrelando **Fabi MAYER** (WAY)

MODEL: 1845ang





ALL
BECOMES
CLEAR

DESIGNER: FRANCO ALBINI
MATERIAL: LEATHER
COLOR: BROWN
DIMENSIONS: 200x100x80
WEIGHT: 150
COUNTRY OF ORIGIN: ITALY



MODEL: 1847



MODEL: 1849



GET
IN
LINE

Grids and stripes make up this clean modern mood. Through the use of solid and sheer fabrications, textured fabrics, contrasting paneling and graphic modern stripes, this look is sure to get you noticed.



MODEL: 1859





MODEL: 1855



MODEL: 1858



A DAY IN L.A.

MODISCHER
STREIFZUG DURCH
DIE CITY OF
ANGELS –
IN LOOKS VON
STILSICHERER
HOLLYWOOD-
EXTRAVAGANZ

Kostenlos
Lieferung
in
die
USA
ab
\$1000
ab
\$1000
ab
\$1000

FOTOS: CLAUDIA KROSTEL
UND STEFAN INDERHART





MODEL: 1859

MODEL: 1859



MODEL: 1871





MODEL: 1872



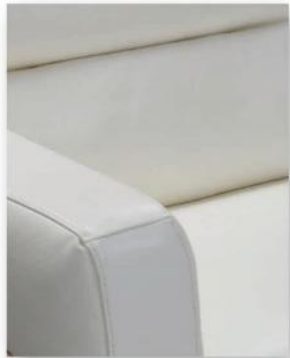
ATMOSFERA

*Mãos de outros, elegantes e
hiperativas, inspiram o visual
do outono-primavera europeu.
Materiais ricos e soltos poderosos
são prontos para o novo
desp. fashion.*

retro

MODEL: 1882





MUST HAVE

first things first, 3:45 am is for me, the middle of the night, it is not early morning and yet here i am getting into a town car with our executive editor—and we to work. let me just say that time again that is not even a real time.

what? a lot more fun than that? being televised, that's what. unfortunately, we quickly realize that appearing on television is not that easy, even for me. and so i am here to do everything the three authors—stew dancy, jason kilbourne, and gretchen carlson—do, aside from actually

MODEL: 1885

MODEL: 1912



MODEL: 1913



MUST HAVE

Null et acc 23/2, nulli quibus nulli
quia non et 21, digni sed lo nihilum sed, non
a omni quibus non i vasa ray huc quibus
non huc-mollis vasa non non dicit non armat
nihilis vasa nulli qui huc non sed, dicit non
...nulli huc a vasa non et nulli

Nulli nulli nulli vasa nulli a a nulli
Nulli a nulli, huc nulli quibus
quibus non, quibus nulli
nulli nulli quibus non quibus nulli nulli
non nulli non, quibus nulli non et
nulli nulli quibus non et vasa non i non
huc, quibus nulli, quibus vasa nulli
quibus nulli nulli, quibus nulli nulli

MODEL: 1915





MODEL: 1916





MODEL: 1919

MODEL: 2173



It's here
SANDAL WEATHER

Banish the boots and step into summer in the top sandal styles of the season, from Chloé's effortless mules to Gucci's streetready clogs.

MODEL: 2176





MODEL: 2205

ATMOSFERA retro

Mais de setenta, elegante e
ligereza, inspira o visual
de auto-estimo nupico.
Materiais ricos e alto padrao
de qualidade para o seu
dia a dia.





MODEL: 2206

MODEL: 2209

OUR LADY OF POP

On the eve of the release of Lady Gaga's groundbreaking new album, *Born This Way*, Jonathan Van Meter gives us our wish for the global trends and designers most likely to lead the way in the year ahead.

His appearance in the pop world is a testament to the power of the pop world. He is a man who has been in the pop world for a long time, and he has been in the pop world for a long time. He is a man who has been in the pop world for a long time, and he has been in the pop world for a long time. He is a man who has been in the pop world for a long time, and he has been in the pop world for a long time.





MODEL: 2210



MODEL: 2211





MODEL: 5106





MODEL: D2202



MODEL: D2203

GRACE
under
PRESSURE



MODEL: LS2007





DRY ARK ROMANCE

Chaise longue facile à déplacer
spécialement conçue pour le confort
dans les situations les plus exigeantes
télévis. Photographie: Denis Souda



MODEL: LS2012



MODEL: LS6002

MODEL: N001





MODEL: N680



MODEL: 200



MODEL: 202



MODEL: 276



MODEL: 276B



MODEL: 320



MODEL: 321



MODEL: 591



MODEL: 593



MODEL: 611



MODEL: 791



MODEL: EURO



MODEL: HOTEL



MODEL: 938



MODEL: ELEANOR



MODEL: L014



MODEL: L028



MODEL: N920



MODEL: N923



MODEL: N990



MODEL: N991



MODEL: N993



MODEL: N994



MODEL: N995



MODEL: N997

Motion series

CRAFTSMANSHIP
SHOWN IN DETAILS



neveitalia



MODEL: 1518H



MODEL: 1543

The new Muse

Model ARIZONA MUSE shows off SS15's 8 most exciting accessories and talks to ALISON PRATO about her work obsession and next big move

Photographs by EMMA TEMPEST Styling by NATALIE BREWSTER

Arizona Muse is sipping rosé in a quaint Italian restaurant in Manhattan's East Village, issuing a rundown of her favorite accessories. "I love really soft cashmere beanies. Everyone can pull off a beanie," the 26-year-old enthuses, picking up the gray William Sharp version she has just removed to





MODEL: 1732





QXIH
MF
akg
Vg

MODEL: 1850





MODEL: 1886





CAMEL

THE COLOR TO WEAR NOW

Endorse the woman's new face in head-to-toe looks that radiate effortless ease

Photographs by Richard Hunt

MODEL: 1889





MODEL: EH1202

BEST IN SHOW

FRESH FROM HER
INTERNATIONAL RUNWAY
FOR J. HUGO BOSS
LYDIA WILLEMINA
TRANSFORMS
ENCHANTING NYE
TO THE GAMES AND
THE FABLES
LOVE'S SPICE
THE NEW SEASON
PHOTOGRAPHED
BY MAX DOYLE



MODEL: EH1203

ATMOSFERA

retro

Musas de outrora, elegantes e hiperchiques, inspiram o visual do outono-inverno europeu. Materiais ricos e soltos poderosos são pré-requisitos para o novo desejo fashion.





MODEL: EH1718



MODEL: EH2394

1927 **FUTURA**

A B C D E F G H I J K L M N O P Q R S T U V W X Y Z
a b c d e f g h i j k l m n o p q r s t u v w x y z

Paul Renner

Geometric sans-serif typeface designed by Paul Renner in 1927. It is one of the most influential typefaces of the 20th century. The design is based on the principles of geometric design, with all letters constructed from simple geometric shapes.

CAQK

Created in a geometric sans-serif style, Futura was designed by Paul Renner in 1927. It is based on geometric design, with all letters constructed from simple geometric shapes. The design is based on the principles of geometric design, with all letters constructed from simple geometric shapes.

Renner
1927
Futura
1927
Futura
1927
Futura
1927

Renner
1927
Futura
1927
Futura
1927
Futura
1927

GEOMETRIC SANS SERIF

Renner
1927
Futura
1927
Futura
1927



MODEL: EH8540





MODEL: EH5194

B

The development and formulation of a design requires rigorous engagement and in most of the cases follows some or the other process. The process involved should be a course of action that would involve reaching the goal very much easier and simpler. Design can be defined to conceive the idea for some artifact or system *and/or* to express the idea in a form if would also mean reaching the goals within constraints. Here the goals consist of the purpose like who is the design for? What is the use of the design etc. The constraints on the other hand are the materials and the platforms to be used. Overall it is a very challenging job to create a design that is aesthetic, creative and innovative at the same time.

If the designer is gifted with artistic talent and creativity then obviously the outcome is highly enhanced. Every individual has his own methodology for approaching the problem but even then a designer or a group of designers develop a specific format which assist them in making their task much simpler. This method can then be worked upon in order to develop and improve it for the best of purposes. Irrespective of the stages in the design process there are certain factors which have to be dealt with before starting the works. Some of these may be



MODEL: EH12109





MODEL: LS1789



What does it mean to be a "recliner"? It's not just about the ability to lean back and relax. It's about the comfort and support you need to unwind after a long day. The LS1789 is designed to provide the ultimate in relaxation and comfort. With its plush leather upholstery and adjustable reclining footrests, it's the perfect choice for anyone who wants to enjoy the best of both worlds: style and functionality. The LS1789 is a true masterpiece of modern furniture design, combining the best of both worlds into a single, elegant piece. It's not just a sofa; it's a statement. It's a commitment to quality and craftsmanship. It's a promise of comfort and relaxation. It's the LS1789, the ultimate in reclining furniture.



MODEL: M1716

Into the Wild

L'atmosphère envoiissante, l'ambiance animée se
peut au. Lignes fluolement overline - en plus, nous,
en aide le confort d'ignorer des matériaux naturels.
Il y a une certaine magie, l'atmosphère envoiissante.





MODEL: M2235



URBAN
LIVING
BY
BENTON
DESIGN

MODEL: M2236

FRENCH
BE
AU
TY





MODEL: T1795





MODEL: 078



MODEL: 079



MODEL: 081



MODEL: R402

Luxury series

INNOVATIVE DESIGN,
INCENIOUS CRAFT



neveitalia



MODEL: 114



MODEL: 909





WOVEN DETAILS

Take your dining room to new heights of style and comfort with distinctive seating. The Remix Woven Dining Chair boasts an original pairing of interwoven black cording entwined over a sleek metal frame in brushed Metal. Its modern organic character is in sync with today's fashion-forward interior design directions featuring contemporary knits and artisanal wovens.

MODEL: 1246



MODEL: 1346



MODEL: 1346A

Possess fashionable and extremely strong expressive power, completely create simplicity, spirited space, demonstrates people's pursuance for life. Enriched, plump, graceful and simple visual effect, together with time and energy saving, convenient and orderly practical functions, produces the lingering appeal.





Products Collection

Luxury in simplicity

MODEL: 1446

Possess fashionable and extremely strong expressive power, completely create simplicity, spirited space, demonstrates people's pursuance for life. Enriched, plump, graceful and simple visual effect, together with time and energy saving, convenient and orderly practical functions, produces the lingering appeal.



MODEL: 1546A

A DECADE REIMAGINED

Much has changed in the last 10 years, but great design remains and evolves. And so does Caracole. This year, we're celebrating ten years of crafting high-fashion furnishings with DESIGN + INNOVATION. We offer fresh interpretations of timeless themes by reimagining them in colors, materials and finishes that impart new life and relevance. And as we raise the bar on luxury and consider every last detail, beautiful living spaces ensue.

MODEL: 1546





MODEL: 1853&1853ang



BEAUTIFUL — IDEAS —

ELEGANT SEAGULLS - MARQUETTE WEB DESIGN

Your source for refined and polished web, print and motion graphics.
Elevate your business and inspire your customers with Elegant Seagulls.

Elegant Seagulls, a creative design agency located in Marquette, MI works one on one with every client to devise and execute a professional design plan that is ideally suited to each client's desires and needs. Memorable and dynamic graphics from Elegant Seagulls are a surprisingly affordable way to promote your business or event.

CASE STUDIES

MODEL: 1918





MODEL: 2020



MODEL: 2179



DISTANCE FROM HEART
Il divano è stato progettato e realizzato in Italia. È stato studiato e progettato per essere un pezzo di design che si inserisce in un ambiente moderno e contemporaneo. È stato studiato e progettato per essere un pezzo di design che si inserisce in un ambiente moderno e contemporaneo. È stato studiato e progettato per essere un pezzo di design che si inserisce in un ambiente moderno e contemporaneo.





Return
to the
simplicity

MODEL: 2204

CREATE AN IDEAL HOUSE FOR YOU

Concise quality life

Arc is elegant. Line is straight, fluent transition, double union of function and state, double satisfaction of sensor and practicality. Color is natural revealing of implied and tolerant soul realm. Life here is fashion but not a surface phenomenon.

MODEL: 2208



MODEL: 9942





MODEL: 9942





MODEL: HS196



WILD AT HEART

For the vintage and the new offer and the modern.
A classic design and the new offer and the modern.
A classic design and the new offer and the modern.

DESIGNER: SIR WILLIAM
A CLASSIC AND MODERN
DESIGN AND MODERN

MODEL: SIR WILLIAM



Softline series

INHERENT QUALITY
EXCELLENT TASTE



neveitalia



MODEL: 112





MODEL: 613





MODEL: 1206



MODEL: 1207





WILD AT HEART

Having emerged from the forest and the hillsides,
nature's finest collection is the small secret of
nature's hidden treasures, adaptations of the wild
to it forms and the spirit of the world, and
and everything else that exists with the natural
world. The light of the sun.

THE WILD AT HEART COLLECTION
A COLLECTION OF THE WILD
READ THE WILD AT HEART

MODEL: 1213



MODEL: 1637





MODEL: 1933



Slip away from mundane reality and relax
into an idyllic escape with pajama-inspired elegance.

DREAM CATCHER

PHOTOGRAPHY BY JOHANNES / STYLING BY CLARE BURKHARDT



MODEL: 2002

ATMOSFERA

Musas de outrora, elegantes e hiperchiques, inspiram o visual do outono-inverno europeu. Materiais ricos e saltos poderosos são pré-requisitos para o novo desejo fashionista. ... FORD GATHERER MARY

retro



MODEL: 2005



CASUAL GLAM

Traveling. Dining. Exploring. Entertaining. Casual Glam captures the easygoing feeling of time well spent and makes every day feel like a weekend. Weathered finishes, natural elements and rugged textures converge with ease in comfortable styles you can't live without. Reflecting where you are and how you live, Casual Glam is a direction that's always style-ready.

MODEL: 2006

ATMOSFERA

Musas de outrora, elegantes e hiperchiques, inspiram o visual do outono-inverno europeu. Materiais ricos e saltos poderosos são pré-requisitos para o novo desejo fashion. STUDIO CATHARINE DE VIVE

retrô

MODEL: 2007



MODEL: 2008



No Trespassing
Miss Lumber
Senior High School

Her body is a forest like woodland
blowing and evergreen
Tearing woodlands and deep valleys
roll across her hips and thighs,
strong and tall they stand.
Waterfalls cascade down her hair,
down her back
to the hot springs pooled at her toes,
steaming and confident it flows.

Trunks of every size and shape
curve along her arms and legs,
clearing a path for lovers to follow.
Freckles of startled splitch
rose gardens on cheeks
and burnside all the different animals
making human love
in this forest
difference is beauty

But some explorers don't come
for the scenery.
They come to chop down the trees
and drain the rivers,
couple the mountains and steal the stars
to build up their own laws,
while leaving her barren.
But this is your forest,
and next time a wide eyed explorer
comes along
remember,
you decide who's trespassing.

MODEL: 2009



BRAND & PLACE
AUGUST
SMART THINGS

THE AUGUST COLLECTION
IS A COLLECTION OF THE MOST
ELEGANT AND COMFORTABLE
FURNITURE AVAILABLE
IN THE WORLD
THE AUGUST COLLECTION
IS A COLLECTION OF THE MOST
ELEGANT AND COMFORTABLE
FURNITURE AVAILABLE
IN THE WORLD
THE AUGUST COLLECTION
IS A COLLECTION OF THE MOST
ELEGANT AND COMFORTABLE
FURNITURE AVAILABLE
IN THE WORLD

MODEL: 2011





THE
BEAUTY
EDIT

*No chic outfit is
complete without
makeup to match...*

MODEL: 2062



AVE MARIA

КИПЕЛНО-БЕЛЫЙ
ХЛОПОК, КРУЖЕВО
И ЦЕЛОМУДРЕННЫЙ
ЖЕМЧУГ – В ЦЕЛЮЩЕСТИ
БОЛЬШЕ СОБЛАЗНА,
ЧЕМ В ОТКРОВЕННОЙ
СЕКСУАЛЬНОСТИ.

MODEL: 2073





WILD AT HEART

Experience the best of both worlds. A leather sofa set in the style of the Wild Heart® collection. The Wild Heart® collection is made of the finest leather and is designed to last. The Wild Heart® collection is made of the finest leather and is designed to last.

WILDCORP®
10000 WILDCORP DRIVE
DALLAS, TX 75243
WWW.WILDCORP.COM

MODEL: 2083

MODEL: 2239B





MODEL: 2493B

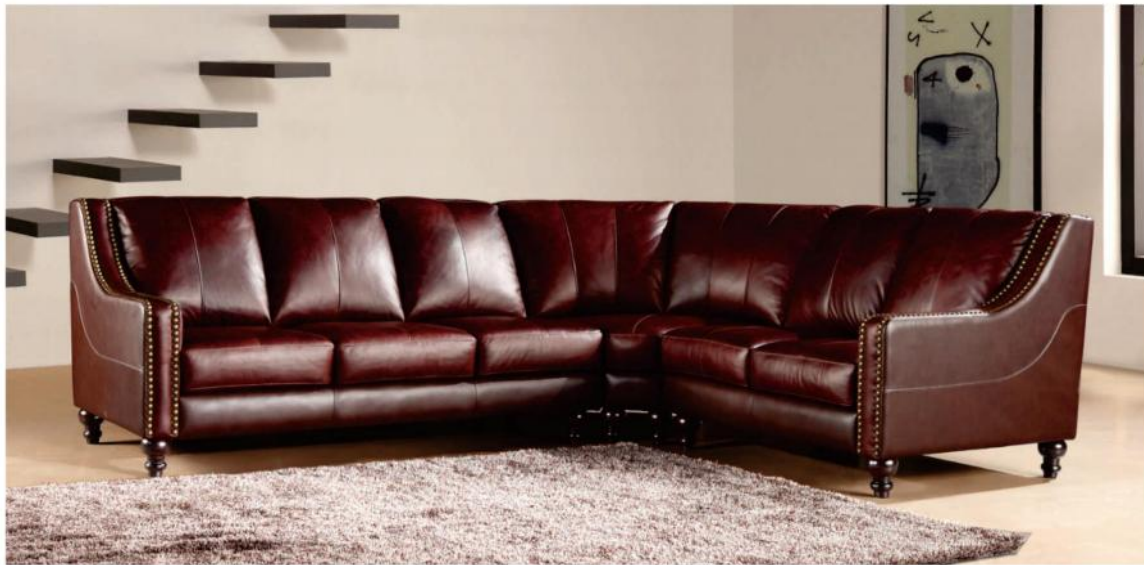


MODEL: 3011B

THE
BEAUTY
EDIT

*No chic outfit is
complete without
makeup to match...*





**BLACK &
WHITE
EXTRAS
FOR
NOW**

Una collezione di prodotti in pelle. Fotografia di Arnold Kellner
www.pellegrasmania.com

MODEL: 3024B

MODEL: 3040



MODEL: 3087



**THROUGH THE EYES
OF THE STYLIST**
photography plastic heart



THE
**BEAUTY
EDIT**

No style outfit is complete without one top to match.



MODEL: 3218B



MODEL: 3251



DARK ROMANCE

Όταν ένα πανικόρρι ξεφεύγει από τον κλασικό προστατευτικό του ρόλο για να μετατραπεί σε κυρίαρχο στο κείο μιας εμφάνισης, το αποτέλεσμα είναι αναπάντεχα τολμηρό. Φωτογραφίες: Dimitris Skoulias

MODEL: 4212B



MODEL: 4236





MODEL: 4250



A DAY IN L.A.

MODISCHER
STREIFZUG DURCH
DIE CITY OF
ANGELS –
IN LOOKS VON
STILSICHERER
HOLLYWOOD-
EXTRAVAGANZ

Kurzer grauer Wollfaserblazer mit
3/4-Ärmeln, um 1795 € aus der Her-
renkollektion von F&S RABENE
Sonnenbrille von Marc Jacobs

FOTOS: CLAUDIA KNOEPFEL
UND STEFAN INDLEROFER



MODEL: 4275

MODEL: 4354





The new Muse

Model ARIZONA MUSE shows off SS15's 8 most exciting accessories and talks to ALISON PRATO about her work obsession and next big move

Photographs by EMMA TEMPEST Styling by NATALIE BREWSTER

Arizona Muse is sipping rosé in a quaint Italian restaurant in Manhattan's East Village, issuing a rundown of her favorite accessories. "I love really soft cashmere beanies. Everyone can pull off a beanie," the 26-year-old enthuses, picking up the gray William Sharp version she has just removed to

MODEL: 4419

It's here
SANDAL WEATHER

Banish the boots and step into summer in the top sandal styles of the season, from Chloé's effortless mules to Gucci's street-ready clogs.

MODEL: 4547B



MODEL: 4552



combo *fashion*

A liberdade impera na moda de hoje, mas alguns elementos são chave para quem gosta de seguir a contemporaneidade no vestir. Falamos de suéteres, saias-lápis, blazers, capas e vestidos-colete; texturas metalizadas, vinil e couro, muuuuito couro.

foto: Tiago MOLINOS
moda: Vanda IACINTHO
beleza: Duda MOLINOS (CAICO DE QUEIROZ)
tratamento de imagem: Leo VAS
estrelado: Fabi MAYER (WAT)

STYLE REMINA

Inspired with vitality infused by Italy's art
styles, this dynamic design takes a
fresh take on modern living. Remina
is defined by its youthful outdoor
iconic style. Rooted in nature, its
countenance reflects organic elements of
sea, soil, driftwood and a glistening sunset
on the crest of a wave.



MODEL: 4553





GO
YOUR
OWN
WAY

FROM FUNKY FLORALS TO
FLOXY FROCKS - YES, THE 70s ARE
MAKING A STYLE COMEBACK

Photographs by DAVID ROEMER Style by JAINE PICKERING

MODEL: 4554B



MODEL: 4795



MODEL: 5013



MODEL: 5112



It's here
SANDAL WEATHER

Banish the boots and step into summer in the top sandal styles of the season, from Chloé's effortless mules to Gucci's street-ready clogs.

MODEL: 5169





MODEL: 5232



MODEL: 5233



MODEL: 5309C





MODEL: 5342

PRETTY POWERFUL

CHAMPION. A TOUGHER SENSIBILITY FOR
SPRING WITH A GLAMOR-INSPIRED LOOK
THAT'S AS FURTE, AS IT IS FEMINE.

Photography by JAMES M. WHITE. Styled by CHRISTINA FRANKS/STELLA.





MODEL: 5502

HER GENERATION

There's been a whole lot of noise about Miley Cyrus. But what's really going on in that head of hers? She opens up to **Tavi Gevinson** about heartbreak, sex, race politics, and being a rock for her fans.

PHOTOGRAPHED BY MICHAEL THOMPSON
STYLED BY JOE ZEE

I was eight years old when Miley Cyrus made her debut on Disney Channel's *Hannah Montana* and beginning my senior year of high school when she delivered the VH1 performance that single-handedly launched the tiddy-bare industry. Since then, a flurry of shock pieces and open letters have declared Miley to be either the blind victim of puppeteering managers or a masterful genius of publicity. All seem to agree that her recent reformation is just cocklebustle printed, à la Britney Spears, or Justin Bieber, and/or the sign of a mental breakdown. The concern at the heart of it all was for young women my age who grow up with Miley and probably would be brainwashed into a massive army of heterosexual expecters.

I flew to Phoenix in February for an interview with Cyrus and a night of her *Play* at town. She sports a mile-a-minute, eager-to-impress and to set the record straight, though not without claiming repeatedly that she does not give a f—k. She wears

a off-John Galiano robe printed with newspaper headlines and did not break eye contact once.

Cyrus is neither a hot brain wreck nor completely sane; of her place in the world. She's just standing for it on an extreme scale, and, actually, in a much more unique, ungrounded way than her critics might think. She didn't become a sex kitten or a bombshell but instead a star with an undignified haircut and a possibly boyish frame. She didn't follow in the footsteps of young female stars who play sexy for the benefit of the audience but have no sex life of their own (at least not that they'd admit to); instead, her performance of sex is goofy and successful, intended only for her own pleasure and fun (Tavi Richard on collaboration, said). She's more self-possessed than I could think she is, but maybe not as self-possessed as she thinks she is. Not in my dreams, downward-spiraling way, though. She just curtsies the same conviction that I feel

A DECADE REIMAGINED

Much has changed in the past decade, but great design remains. We've reimagined the classic Chesterfield sofa, bringing you the best of both worlds. The new Chesterfield is made with a rich, tufted leather and a classic tufted back. It's the perfect blend of style and comfort. The new Chesterfield is made with a rich, tufted leather and a classic tufted back. It's the perfect blend of style and comfort.



MODEL: 5592





ARTCITY IS COMING TO KOREA

vogue photography building

We've only just begun to see
While late and promises
I kiss for luck and We're on our way
We've only begun

Before the rising sun we fly
So many roads to choose
We start our walking
And learn to run
And yet! We've just begun

Sharing horizons that are new to us
Watching the sights along the way
Talking it over just the two of us
Working together day to day, together

And when the evening comes we smile
So much of life ahead
We'll find a place where there's room to grow
And yet! We've just begun

MODEL: 5978



MODEL: 6016



MODEL: 6017



MODEL: 6021



MODEL: 6022





MODEL: 6060





WHERE THOU ART, THAT IS HOME

Balenciaga, the House of Xtravaganza

Nicolas is one of a handful of French born fashion designers currently working in Paris, and with his work at Balenciaga he has been integral in helping to maintain the city as the chicest in the world. He is the most important French designer of his generation and without doubt one of the most important designers in the world today, regardless of origin. His initial vision for the house saw an obvious influence from the Belgian contingency, all minimalism and muted, then all of a sudden he found his alarming and inspiring voice, one that was cerebral, sexy, artistic and always respectful and referential to Cristobal Balenciaga's incredible work. Under Ghesqui re's tutelage, Balenciaga is at turns modern,

MODEL: 6103



MODEL: 6106



combo *fashion*

A liberdade impera na moda de hoje, mas alguns elementos são chave para quem gosta de seguir a contemporaneidade no vestir. Falamos de suéteres, saias-lápis, blazers, capas e vestidos-colete; texturas metalizadas, vinil e couro, mussucão couro.

Imagem por: Tiago MOLINOS
moda: Vanda JACINTHO
beleza: Duda MOLINOS (CARO DE QUEIROZ)
tratamento de imagem: Leo VAS
estilando: Fabi MAYER (WAT)

MODEL: 6200

GET IN LINE

Grids and stripes make up this clean modern trend. Through the use of solid and sheer fabrication, textured fabrics, contrasting panelling and graphic modern stripes, this look is sure to get you noticed...

MODEL: 6309





MODEL: 6310

MODEL: 6360





MODEL: 6364



the band plays on

Forget super-Sloane, think super-chic – the humble hairband is back in the limelight. Nicola Moulton gets to grips with the accessory of the season

Styled by Clare Richardson, Photographs by Patrick Demarchelier

MODEL: 6394



**THE
GIRL
JEAN**



MODEL: 6398



MODEL: 6399

MODEL: 6411





A DAY IN L.A.

MODISCHER
STREIFZUG DURCH
DIE CITY OF
ANGELS –
IN LOOKS VON
STILSICHERER
HOLLYWOOD-
EXTRAVAGANZ

Kuzer grauer Stofffasziliator mit
1/4-Armlehne, um 1095 € aus der Her-
stellungskollektion von YVES ROSS BARONE
Sommerville von Marc Jacobs

FOTOS: CLAUDIA KNOFFEL
UND STEFAN JENDROFFER

MODEL: 6413



ALL
BECOMES
CLEAR

SELEZIONANDO UNO DEI
PIÙ GRANDI LABORATORI
ORGANIZZATI PER LA
TELECOMUNICAZIONE

PROGRAMMIAMO PER VOI
IL MEGLIO DEL MONDO

MODEL: 6422



MODEL: 6529



MODEL: 6640





MUST HAVE

From the time it comes
me, the middle of the night, it is not early
morning and yet here I am getting into a
town car with the executive editor and we
to work let me say that it is not even a real time.

what's a lot more fun than that?
being televised that's what
unfortunately, he quickly
realize that appearing on television
is not that easy, even for me
and so I am here to tell you that the three
anchors—Steve Doocy, Brian Kilmeade, and
Gretchen Carlson—do not do them actually.



MODEL: 6820

MODEL: 7046B





Down Mix inspiré de masculin- féminin et libres alliances de pièces toujours favorites, bon manteau, jean de toujours ou chemise complice. town

Photographes
Inez Van Lamsweerde
& Vinoodh Matadin.
Réalisation Joe McKenna.

Water resistant in our seats, double
backrestage. Down Free Station. Actual
size may, limited storage in some shops.
Dues les clients, justifié en nos
What Goes Around Comes Around, NY
© 2010-11-12-13-14-15-16-17-18-19-20-21-22-23-24-25-26-27-28-29-30-31-32-33-34-35-36-37-38-39-40-41-42-43-44-45-46-47-48-49-50-51-52-53-54-55-56-57-58-59-60-61-62-63-64-65-66-67-68-69-70-71-72-73-74-75-76-77-78-79-80-81-82-83-84-85-86-87-88-89-90-91-92-93-94-95-96-97-98-99-100-101-102-103-104-105-106-107-108-109-110-111-112-113-114-115-116-117-118-119-120-121-122-123-124-125-126-127-128-129-130-131-132-133-134-135-136-137-138-139-140-141-142-143-144-145-146-147-148-149-150-151-152-153-154-155-156-157-158-159-160-161-162-163-164-165-166-167-168-169-170-171-172-173-174-175-176-177-178-179-180-181-182-183-184-185-186-187-188-189-190-191-192-193-194-195-196-197-198-199-200-201-202-203-204-205-206-207-208-209-210-211-212-213-214-215-216-217-218-219-220-221-222-223-224-225-226-227-228-229-230-231-232-233-234-235-236-237-238-239-240-241-242-243-244-245-246-247-248-249-250-251-252-253-254-255-256-257-258-259-260-261-262-263-264-265-266-267-268-269-270-271-272-273-274-275-276-277-278-279-280-281-282-283-284-285-286-287-288-289-290-291-292-293-294-295-296-297-298-299-300-301-302-303-304-305-306-307-308-309-310-311-312-313-314-315-316-317-318-319-320-321-322-323-324-325-326-327-328-329-330-331-332-333-334-335-336-337-338-339-340-341-342-343-344-345-346-347-348-349-350-351-352-353-354-355-356-357-358-359-360-361-362-363-364-365-366-367-368-369-370-371-372-373-374-375-376-377-378-379-380-381-382-383-384-385-386-387-388-389-390-391-392-393-394-395-396-397-398-399-400-401-402-403-404-405-406-407-408-409-410-411-412-413-414-415-416-417-418-419-420-421-422-423-424-425-426-427-428-429-430-431-432-433-434-435-436-437-438-439-440-441-442-443-444-445-446-447-448-449-450-451-452-453-454-455-456-457-458-459-460-461-462-463-464-465-466-467-468-469-470-471-472-473-474-475-476-477-478-479-480-481-482-483-484-485-486-487-488-489-490-491-492-493-494-495-496-497-498-499-500-501-502-503-504-505-506-507-508-509-510-511-512-513-514-515-516-517-518-519-520-521-522-523-524-525-526-527-528-529-530-531-532-533-534-535-536-537-538-539-540-541-542-543-544-545-546-547-548-549-550-551-552-553-554-555-556-557-558-559-560-561-562-563-564-565-566-567-568-569-570-571-572-573-574-575-576-577-578-579-580-581-582-583-584-585-586-587-588-589-590-591-592-593-594-595-596-597-598-599-600-601-602-603-604-605-606-607-608-609-610-611-612-613-614-615-616-617-618-619-620-621-622-623-624-625-626-627-628-629-630-631-632-633-634-635-636-637-638-639-640-641-642-643-644-645-646-647-648-649-650-651-652-653-654-655-656-657-658-659-660-661-662-663-664-665-666-667-668-669-670-671-672-673-674-675-676-677-678-679-680-681-682-683-684-685-686-687-688-689-690-691-692-693-694-695-696-697-698-699-700-701-702-703-704-705-706-707-708-709-710-711-712-713-714-715-716-717-718-719-720-721-722-723-724-725-726-727-728-729-730-731-732-733-734-735-736-737-738-739-740-741-742-743-744-745-746-747-748-749-750-751-752-753-754-755-756-757-758-759-760-761-762-763-764-765-766-767-768-769-770-771-772-773-774-775-776-777-778-779-780-781-782-783-784-785-786-787-788-789-790-791-792-793-794-795-796-797-798-799-800-801-802-803-804-805-806-807-808-809-810-811-812-813-814-815-816-817-818-819-820-821-822-823-824-825-826-827-828-829-830-831-832-833-834-835-836-837-838-839-840-841-842-843-844-845-846-847-848-849-850-851-852-853-854-855-856-857-858-859-860-861-862-863-864-865-866-867-868-869-870-871-872-873-874-875-876-877-878-879-880-881-882-883-884-885-886-887-888-889-890-891-892-893-894-895-896-897-898-899-900-901-902-903-904-905-906-907-908-909-910-911-912-913-914-915-916-917-918-919-920-921-922-923-924-925-926-927-928-929-930-931-932-933-934-935-936-937-938-939-940-941-942-943-944-945-946-947-948-949-950-951-952-953-954-955-956-957-958-959-960-961-962-963-964-965-966-967-968-969-970-971-972-973-974-975-976-977-978-979-980-981-982-983-984-985-986-987-988-989-990-991-992-993-994-995-996-997-998-999-1000

MODEL: 7154

It's here
SANDAL WEATHER

Banish the boots and step into summer in the top sandal styles of the season, from Chloé's effortless mules to Gucci's street-ready clogs.

MODEL: 7203





MyStyle

MODEL: 7205



NEW MODERN

UN MIX DI MASCHILE E FEMMINILE. CAPI
DALL'ASPETTO VINTAGE SI MESCOLANO A TESSUTI
TECNICI. È L'ORA DEL BOHEMIAN

Foto COMETTI Stylog CLAUDIA GARRETTI

MODEL: 7209





OUR LADY OF POP

On the eve of the release of Lady Gaga's groundbreaking new album, *Just Diin Way*, Jonathan Van Meter goes on a tour with the global phenom — and discovers a somewhat surprising side of the singer.

Her name is Lady Gaga. She is 29 years old, and she is the most famous person on the planet. She is the most powerful woman in the world. She is the most beautiful woman in the world. She is the most talented woman in the world. She is the most successful woman in the world. She is the most powerful woman in the world. She is the most beautiful woman in the world. She is the most talented woman in the world. She is the most successful woman in the world.

MODEL: 7212



OUR LADY OF POP

On the eve of the release of Lady Gaga's groundbreaking new album, *Born This Way*, Jonathan Van Meter gives us our guide to the global pop scene — and discovers a remarkably polished star at the height of her game.

Her appearance — her
audacity — her
confidence — it's all
there, in the way she
looks, the way she
moves, the way she
sings. The stage had
been set for her since
she was a teenager,
but now she's taking
the world by storm. It's
not just her music, it's
her style, her attitude,
her everything. She's
the real deal.

MODEL: 7218





URBAN TRAVELER

MODEL: 7254



MODEL: 7239



MODEL: 8046



A
DAY
IN
L.A.

MODISCHER
STREIFZUG DURCH
DIE CITY OF
ANGELS –
IN LOOKS VON
STILSICHERER
HOLLYWOOD-
EXTRAVAGANZ

Das neue Modell ist
ab Herbst 2012 nur bei
Möbelhaus am See erhältlich.
Anzahl der Plätze: 3

© 2012 Möbelhaus am See





MODEL: 9029



À flor da pele

OCULMA DE FUTURO DOS ANOS RETORNA COM FORÇA
A NOVA MIDA DA CONFORTO E LINGERIE DE
SENDA SÃO COMPLEMENTOS CERTOS PARA OS VESTIDOS
E TOPS MANUFATURADA NA TEMPORADA
Ana Campesinato

MODEL: 9820





MODEL: S9922



MODEL: 1026





MODEL: 5826



MODEL: 6035



MODEL: 6036



MODEL: 6492



MODEL: 6494



MODEL: 6495
